

DEPARTS FROM ARMSTRONG

WHITewater LODGE

With its five comfortable log cabins, Whitewater Lodge is known for its spectacular fishing and down to earth feel. The addition of a main lodge building with satellite TV and Wi-Fi internet as well as light housekeeping service makes Whitewater perfect for your next wilderness adventure.

Walleye? You bet and plenty of them. Pike? We've got those too, and some real lunkers at that. 40in plus trophy northerns are caught and released on a regular basis. It's not uncommon to catch pike 48 inches and over.

TRIP HIGHLIGHTS

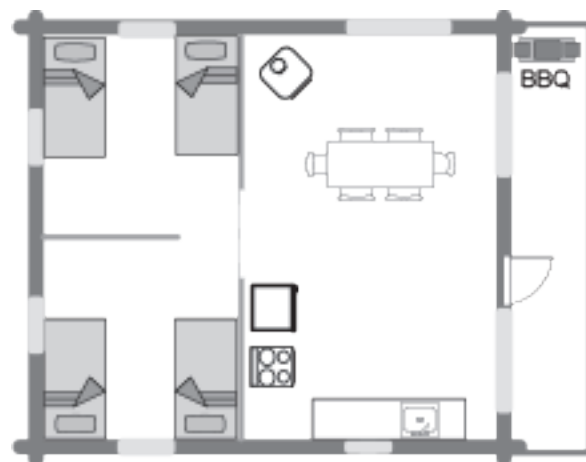
INCLUDED ITEMS

- Return flights to lodge from Armstrong
- Full time electric power in every cabin
- Twin beds or bunks, with bedding
- Outdoor toilet for each cabin
- Propane stove with oven
- Propane fridge with top freezer + ice
- Outdoor propane BBQ
- Daily housekeeping service
- Common shower area with sauna
- Main lodge with common area, satellite TV, and Wi-Fi internet
- 14 + 16ft Lund boats with 15hp & 20hp Yamaha electric start motors (padded swivel seats, anchors, minnow buckets, landing nets, safety kits, and gas included)



WHITewater LAKE STATS

- Latitude: 50 47.3 North
- Longitude: 89 21.9 West
- Length: 26 miles or an area of 26,000 acres
- Avg Depth: 25 feet
- Water Clarity: dark tea-stained water
- Easy access to Ogoki River, Walleye, Northern Pike, & Lake Trout



WHITEWATER LAKE

