

## DEPARTS FROM ARMSTRONG

# MOJIKIT CHANNEL OUTPOST

The Ogoki River feeds into Mojikit Lake through the Mojikit Channel. The channel runs for more than half a mile and has very strong current at all times; this makes for excellent walleye action. The inlet of the channel has a series of rocky reefs, which are prime areas for fishing. One of the best is directly across from the lodge, at the outlet of the channel into Mojikit Lake.

Mojikit Lake itself has many islands and walleye congregate around them as they roam the lake. There are also some tremendous weed beds available, especially at the southwest corner of the lake. Adventurous anglers can venture down to the Summit Control Dam. This dam controls the flow out of Mojikit Lake and is the head of the Jackfish River. Follow the path around the dam and you are likely to catch walleye in the fast water. There have even been reports of brookies from now and then. The Waboose Dam is also easily reached from Mojikit Channel Lodge – it controls the outflow of the Ogoki River and has fishing similar to the Summit Dam.

## TRIP HIGHLIGHTS

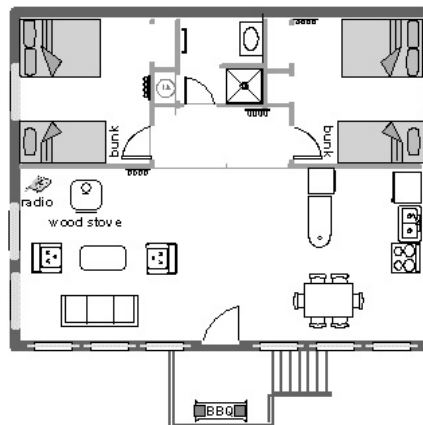
### INCLUDED ITEMS

- Return flights from Armstrong to lodge
- 24-hr electric power
- 5 deluxe cabins
- Full washrooms with showers and flush toilets in each cabin
- Propane stove & oven
- Propane fridge & freezer with ice
- Cookware and utensils
- Spacious living room
- Outdoor propane BBQ
- 14ft and 16ft Lund boats outfitted with 20hp Yamaha electric start motors (padded swivel seats, minnow buckets, anchors, landing nets, safety kits, and gas included)



## MOJIKIT LAKE & OGOKI RESERVOIR STATS

- Latitude: 50 44.7 North
- Longitude: 88 10.7 West
- Length: Mojikit Lake 15 miles long; 28,000 acres; Ogoki Reservoir 41 miles long; 38,000 acres
- Average depth: 25 feet
- Water clarity: dark, tea-stained water
- Easy access to Mojikit Lake and Ogoki Reservoir
- Consistent Northern Pike and Walleye fisheries



# MOJIKIT LAKE & OGOKI RESERVOIR

