

## DEPARTS FROM ARMSTRONG

# DAWN LAKE OUTPOST

Nestled in the heart of Wabakimi Provincial Park, Dawn Lake Outpost is one of our most scenic locations. This deluxe cabin is situated on a rock outcropping at the apex of this x-shaped lake. The cabin faces the southeast offering spectacular sunrise views. Several streams flow into this lake and these inlets are great areas for both walleye and northern. Trophies of both species can be found throughout the year. Don't be surprised if you catch blue walleye in this lake. While some "blues" will only have tinted fins, others are coloured a deep royal blue across their entire back, with a bright white belly. Make sure your camera is ready for some unforgettable specimens. This cabin is ideal for the perfect getaway; the fishing is fantastic, and the amenities will make sure your stay is comfortable.



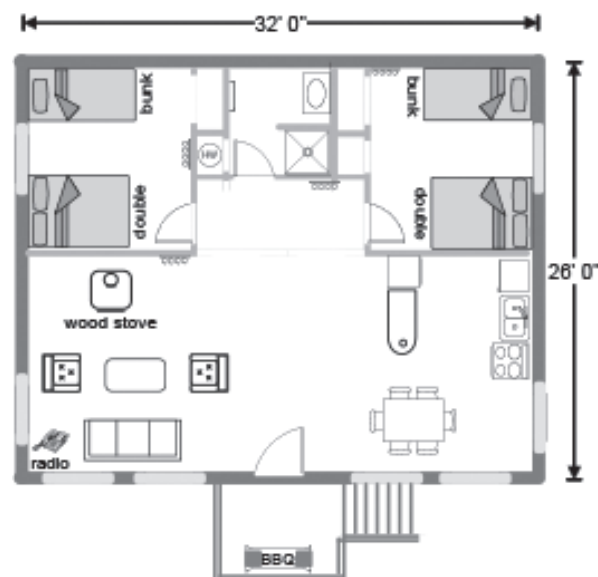
## TRIP HIGHLIGHTS

### INCLUDED ITEMS

- Return flights from Armstrong to outpost
- Accommodations for up to 6 people
- Two bedrooms each with single bunks and a double bed.
- Indoor washroom with shower and sink + hot & cold running water
- Outdoor toilet
- Propane stove with oven, fridge with top freezer & outdoor grill
- Cookware and all utensils provided
- Propane Lights
- Wi-Fi internet
- 3 - 14ft SV Lund boats and 15hp Yamaha motors (padded swivel seats, minnow buckets, anchors, landing nets, safety kit, and gas included)
- Canoe with paddles

## DAWN LAKE STATS

- Latitude: 50 57.6 North
- Longitude: 89 31.2 West
- Length: 5 miles N - S, 4 miles E - W
- Avg Depth: 15 feet
- Water Clarity: Dark tea-stained water
- Prolific walleye & northern pike fishery



# DAWN LAKE

