

## DEPARTS FROM ARMSTRONG

# D'ALTON LAKE OUTPOST

This long, Y-shaped lake is one of our trophy walleye spots. The lake has excellent structure and good current flow. The lake is narrow, but fairly long:

7 miles of pure walleye territory. Consistently large walleye are found because of the healthy bait fish population here. Many tributaries flow into this lake and there is a waterfall just south of the cabin – a hot spot mid-summer for walleye. Later in the summer, there are some deep holes (from 30 up to 100 feet) and cool water which make fantastic hot spots for anglers to wet their line.



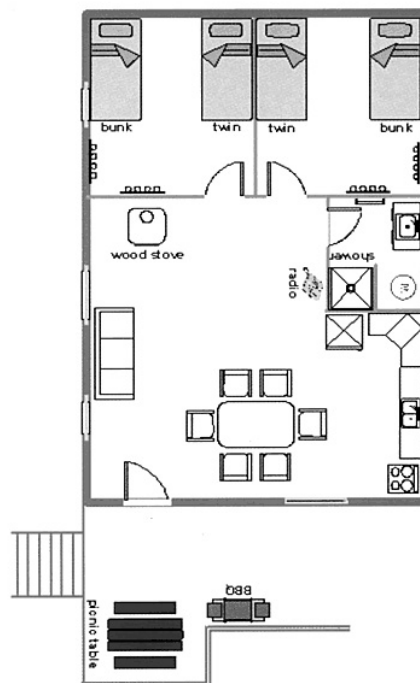
## TRIP HIGHLIGHTS

### INCLUDED ITEMS

- Return flights from Armstrong to outpost
- Cabin accommodates up to 6
- Two bedrooms each with single bunks & single bed
- Wood fireplace
- Indoor washroom with shower, sink and hot & cold running water
- Outdoor toilet
- Propane stove with oven
- Propane refrigerator with top freezer
- Cookware and utensils provided
- Outdoor propane barbecue
- Solar lights
- WI-FI internet
- 14-foot Lund boats all outfitted with 15hp Yamaha motors (padded swivel seats, minnow buckets, anchors, landing nets, safety kit, and gas included)

## D'ALTON LAKE STATS

- Latitude: 50 27.1 N
- Longitude: 88 55.3 W
- Length: 9milesNtoS
- Average depth: 15 feet with depths up to 100 feet
- Water clarity: dark, tea-stained water



# D'ALTON LAKE

